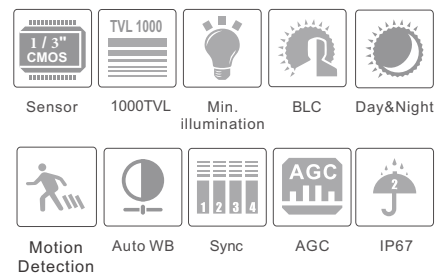


VTC-E200EL

2MP Fixed Conch HD Camera



- 1080P real time image, high definition, true color,
- AHD / TVI / CVI standard and lossless video output
- Up to 1000 TVL resolution
- Support OSD menu
- High speed, long distance and real time transmission
- Auto color to B / W at low illumination
- Support ICR switch, true day / night
- Support noise reduction function
- 25m IR night view distance
- IP67
- Support 960H CVBS output



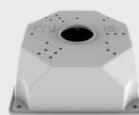
SPECIFICATIONS

Model Specifications	VTC-E200EL
Camera	
Image Sensor	1 / 3 "CMOS
Resolution	2MP
Image Size	1920x1080
Video Output	AHD / TVI / CVI / CVBS
Image System	PAL / NTSC
Electronic Shutter	Auto; 1/25s~1/50000s(PAL); 1/30s~1/50000s(PAL)
IR Distance	25m
Frame Rate	30fps(60Hz); 25fps(50Hz)
Min. Illumination	Color : 0.01 lux@F2.0, AGC ON; B/W : 0 lux with IR
Lens	2.8 mm
Lens Mount	M12
S / N Ratio	≥52dB (AGC OFF)
Ingress Protection	IP 67
Functions	
Scanning System	Progressive Scan
Day & Night	ICR
WDR	DWDR
3D NR	Yes
Global Exposure	No
Central Exposure	No
AGC	Yes
Auto White Balance	Yes
BLC	Yes
LSC	Yes
HLC	Yes
Freeze	Yes
Mirror	No
Defog	No
Sharpness	Yes
Infrared LED	42μ x 2PCS
Motion Detection	Yes
Privacy Mask	Yes
Defect Correction	No
Language	3 languages
UTC	Yes
Others	
Power Supply	DC12V (± 15%)
Power Consumption	IR OFF : < 1.5W; IR ON : < 4.5W
Working Environment	- 20 °C ~ 60 °C, 10 % ~ 95 % (relative humidity)
Dimensions (mm)	Φ 9 6 x 9 1
Weight (net)	Approx. 0.6 KG

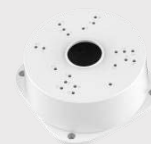
AVAILABLE MODEL

Available Model	VTC-E200EL
-----------------	------------

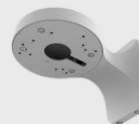
AVAILABLE ACCESSORIES



VTC-B116



VTC-PC115



VTC-173-01



VTC-PB14146