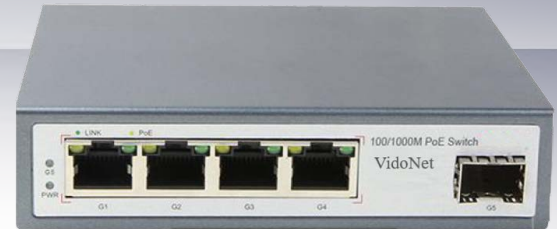


5-Port Gigabit Single-mode Dual Fiber Media Converter VT-GMCS

❖ FEATURE

- All series supports gigabit RJ45 port and gigabit fiber port combination, which enables users to flexibly build networking to meet the needs of various scenarios.
- Support non-blocking wire-speed forwarding.
- Support full-duplex based on IEEE802.3x and half-duplex based on back-pressure.
- Compatible with IEEE802.3ab 1000Base-T, IEEE802.3z 1000Base-X network protocol, gigabit RJ45 port rate auto-negotiation
- Support full-duplex/half-duplex working mode with auto-negotiation function
- Automatic identification of twisted pair MDI/MDI-X cross lines and parallel lines
- Plug and play, no configuration required, centralized power supply and centralized connection management through 2U-14 slot rack
- LED working status indication for network diagnosis and fault checking, reducing maintenance workload.
- Low power consumption, No fan, galvanized steel casing.
- CCC,CE, FCC, RoHS.
- Comply with telecommunication network access requirements, and have the telecommunications equipment network access license of the MIIT.



Overview

The VT-GMCS series is a gigabit fiber media converter independently developed by ONV. It has 4* 10/100/1000Base-T ports and 1*1000M up-link SC /LC fiber port, User can select different optical modules, such as multi mode dual fiber, single-mode dual fiber, and single-mode single fiber. The media converter adopts the enterprise-class Taiwan Realtek company's carrier-grade chip solution, which has stable performance, good quality and high cost performance. It is suitable for optical fiber access application scenarios such as security monitoring, wireless coverage, intelligent transportation, and safe cities to form a cost-effective and stable communication network.

Unmanaged model, plug and play, no configuration, easy to use.

Specifications

Model	VT-GMCS
Interface	4* 10/100/1000Base-T ports (Data) 1*1000M uplink SC/LC fiber port (Data)
Ethernet Port	10/100/1000Base-T,auto-sensing, Full/half duplex MDI/MDI-X self-adaption
Twisted Pair Transmission	10BASE-T: Cat3,4,5 UTP(≤100 meter) 100BASE-TX: Cat5 or later UTP(≤100 meter) 1000BASE-T: Cat5e or later UTP(≤100 meter)
Optical Fiber Port	1.25Gbps,single-mode single fiber LC interface
Optical Cable/Distance	single mode: 1310nm / 0 ~ 40km, 1550nm / 0~120km.
Network Protocol	IEEE802.3 10BASE-T, IEEE802.3i 10Base-T IEEE802.3u 100Base-TX , IEEE802.3ab 1000Base-T IEEE802.3z 1000Base-X, IEEE802.3x
Forwarding Mode	Store and Forward(Full Wire Speed)
Switching Capacity	10Gbps
Forwarding Rate@64byte	7.44Mpps
MAC	2K
Buffer Memory	1M
Jumbo Frame	1632byte
LED Indicator	Power: PWR (green), ON/OFF, Data: Link (green); ON/OFF/Blink, fiber: G5 (green); ON/OFF/Blink

Specifications

Total PWR / Input Voltage	6W/ (12VDC)
Power Supply	External power supply: AC100-240V input.
Power Consumption	Standby<1W,Full Load<6W
Operation TEMP / Humidity	-20~+55°C;5%~90% RH Non condensing
Storage TEMP / Humidity	-40~+85°C;5%~95% RH Non condensing
Dimension (L*W*H)	118*95*28mm
Net /Gross Weight	<0.3kg / <0.8kg
Installation	Desktop, wall-mounted
Lightning protection / protection level	Lightning protection: 4KV 8/20us, Protection level: IP30
Certification	CCC;CE mark, commercial; CE/LVD EN60950; FCC Part 15 Class B; RoHS