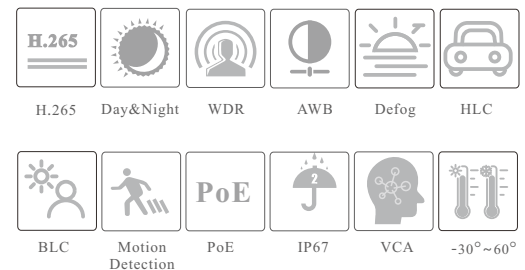


VTC-B21AF

2MP IR Starlight Bullet Network Camera



- 2MP (1920 × 1080) @30fps
- H.265+/H.265/H.264+/H.264/MJPEG coding
- ICR auto switch, true day / night vision
- 30 ~ 50m IR night view distance
- Starlight
- Fixed or motorized zoom lens optional
- 3D DNR, true WDR, HLC, BLC, Defog, Smart IR and ROI coding
- Support corridor mode
- Support electronic image stabilization
- Built-in micro SD card slot
- DC12V/PoE power supply
- IP67 ingress protection
- Support three streams
- Support mobile surveillance by smart phones & tablet PCs with iOS and Android OS
- Intelligent analytics

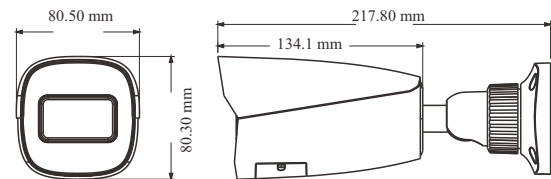


SPECIFICATIONS

| Specifications | Model | VTC-B21AF | | |
|------------------------------|--|------------------|-----------------|-----------------|
| Camera | | | | |
| Image Sensor | 1 / 2.8 "CMOS | | | |
| Image Size | 1920 × 1080 | | | |
| Electronic Shutter | Auto/Manual mode; manual: 1 / 3 s ~ 1 / 100000 s | | | |
| Iris Type | DC Iris | | | |
| Min. Illumination | 0.005 lux@F1.6, AGC ON; 0 lux with IR; 0.0038 lux@F1.4, AGC ON; 0 lux with IR | | | |
| Lens | 2.8~12mm@F1.4, H.FoV: 100°~31°; V. FoV: 53°~17°; D.Fov: 119°~36° | | | |
| Focus | Motorized | | | |
| Lens Mount | Φ14 | | | |
| Day & Night | ICR | | | |
| Wide Dynamic Range | 120dB | | | |
| BLC | Yes | | | |
| HLC | Yes | | | |
| Defog | Yes | | | |
| Digital NR | 3D DNR | | | |
| EIS | Yes | | | |
| S/N Ratio | ≥50dB | | | |
| Angle Adjustment | Pan: 0°~360°; Tilt: 0°~90°; Rotation: 0°~360° | | | |
| Image | | | | |
| Video Compression | Main stream: H.265+ / H.265 / H.264+ / H.264 Sub / third stream: H.265+ / H.265 / H.264+ / H.264 / MJPEG | | | |
| H.264 Compression Standard | Baseline Profile/Main Profile/High Profile | | | |
| Resolution | 1080P(1920×1080), 720P(1280×720), D1, CIF, 480×240, VGA(640×480) | | | |
| Main Stream | 1080P/720P(60Hz: 1 ~ 30fps; 50Hz: 1 ~ 25fps) | | | |
| Sub Stream | 720P/D1/CIF/VGA(60Hz: 1 ~ 30fps; 50Hz: 1 ~ 25fps) | | | |
| Third Stream | D1/CIF/480×240/VGA(60Hz: 1 ~ 30fps; 50Hz: 1 ~ 25fps) | | | |
| Bit Rate | 64 Kbps ~ 6 Mbps | | | |
| Bit Rate Type | VBR / CBR | | | |
| Audio Compression | G711A / U | | | |
| Image Settings | ROI, Saturation, Brightness, Hue, Contrast, Wide Dynamic, Sharpness, Image Mirror, Image Flip, NR, etc. adjustable through client software or web browser | | | |
| ROI | Each ROI to be configured separately | | | |
| Interfaces | | | | |
| Network | RJ 45 10M/100M self-adaptive Ethernet port | | | |
| Video Output | No | | | |
| Audio | 1CH audio input | | | |
| Storage | Built-in micro SD card slot; up to 256GB | | | |
| Reset | Yes | | | |
| Alarm | No | | | |
| Intelligent Analytics | | | | |
| Smart Event | Line crossing, region intrusion/entrance/exiting, loitering detection, illegal parking detection, abandoned/ missing object detection | | | |
| Target Counting | Target counting by line/area, heat map | | | |
| Exception Detection | Scene change, video blur and abnormal color detection, audio exception | | | |
| Face Detection | Face detection and face capture | | | |
| Video Metadata | Simultaneously captures human body, motor vehicle and non-motor vehicle and extracts 13 human features, 5 motor vehicle features and 1 non-motor vehicle feature | | | |
| DORI Distance | | | | |
| Lens | Detect | Observe | Recognize | Identify |
| 2.8mm | 41.49m(136.12ft) | 16.60m(54.46ft) | 8.30m(27.23ft) | 4.15m(13.61ft) |
| 3.6mm | 50.89m(166.96ft) | 20.35m(66.76ft) | 10.18m(33.39ft) | 5.09m(16.69ft) |
| 2.8~12mm(W) | 43.32m(142.12ft) | 17.33m(56.85ft) | 8.66m(28.41ft) | 4.33m(14.20ft) |
| 2.8~12mm(T) | 144.53m(474.17ft) | 57.81m(189.66ft) | 28.91m(94.84ft) | 14.45m(47.40ft) |
| Functions | | | | |
| Remote Monitoring | Web Browser/ NVMS2.0/NVR/mobile APP | | | |
| Web Browser | IE11(plugin-in required)/Chrome 89.0+/Edge 89.0+/Firefox 87.0+/Safari 14.0+ | | | |

| | |
|--------------------------|---|
| Online Connection | Support simultaneous monitoring for up to 10 users; Support multi-stream real time transmission |
| Network Protocol | UDP, IPv4, IPv6, DHCP, NTP, RTSP, RTP, RTMP, RTCP, PPPoE, DDNS, SMTP, FTP, SNMP, HTTP, HTTP POST, 802.1x, UPnP, HTTPS, QoS |
| Interface Protocol | ONVIF(profile S, G, T, M) |
| Storage | Network remote storage; micro SD card storage |
| Smart Alarm | Motion detection, SD card error, SD card full, IP address conflict, cable disconnection |
| General Function | Watermark, video mask, heartbeat, corridor pattern |
| Security | Video encryption, firmware encryption, HTTPS encryption, configuration encryption, illegal login lock, IP address filtering, 802.1x authentication, basic and digest authentication for HTTP/RTSP |
| PoE | Yes, IEEE802.3af |
| IR Distance | 30 ~ 50 m |
| Ingress Protection | IP67 |
| Others | |
| Power Supply | DC12V/PoE |
| Power Consumption | < 9.5W |
| Storage Conditions | - 30 °C ~ 65 °C (-22°F~149°F), Humidity: less than 95 % (non-condensing) |
| Operating Conditions | - 30 °C ~ 60 °C (-22°F~140°F), Humidity: less than 95 % (non-condensing) |
| Dimensions (mm) | 217.8 × 80.5 × 80.3 |
| Weight (net) | Approx. 0.67KG |
| Installation | Ceiling mounting; Wall mounting |
| Certificate | CE, FCC |
| Environmental Protection | Directive EU RoHS, WEEE(2012/19/EU), directive 94/62/EC and REACH(EC1907/2006) |

DIMENSIONS



AVAILABLE ACCESSORIES



VTC-YXH0301



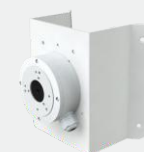
VTC-YXH0103



VTC-YXH0104



VTC-YXH0301+
VTC-YZJ0501



VTC-YXH0301+
VTC-YZJ0601



VTC-YXH0301+
VTC-YZJ0810

AVAILABLE MODEL

| | | |
|-----------------|-----------|---------------------|
| Available Model | VTC-B21AF | Motorized zoom lens |
|-----------------|-----------|---------------------|