

SONY

See everything, miss nothing.
With extraordinary 4K technology



Ultra-high Sensitivity
4K Network Camera
SNC-VB770



4K

pro.sony-asia.com/security

Clearer pictures, even in near darkness

Thanks to the ultra-high sensitivity of expandable ISO409600*, the SNC-VB770 features a minimum illumination of 0.004 lx to capture exceptionally detailed 4K/30 fps colour video, even at night and in similar extreme low lighting environments.

SNC-VB770 uses the 35mm full-frame Exmor™ CMOS sensor that is developed based on Sony's most advanced image processing technology. The sensor significantly captures more incident light than conventional camera sensors, to bring drastic improvements to the sensitivity.

The camera also uses a Sony-developed image processing engine to achieve extremely high sensitivity and low noise at the same time. Area-specific noise reduction selectively divides the image into areas based on patterns, to efficiently reduce noise and improve the image quality.

**Standard ISO 100-102400, expandable to 50-409600*

Comparison of images captured in poorly-lit environment with SNC-VB770, SEL35F14Z lens.



Night view captured to simulate human eye condition; camera is set at 21dB Gain, approx. ISO 1200.



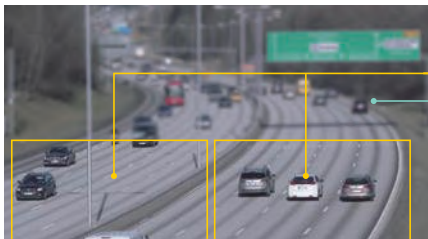
Delivering a clear full colour night view, that gives greater visibility than human eye when camera is set at 72dB Gain, approx. ISO 409600.



Maximum detail where it matters

Intelligent Coding optimizes efficient management of network bandwidth while maintaining 4K resolution where it's needed. On roads and motorways, maximum 4K resolution can be used to accurately recognize car number plates, while lower resolution can be specified for other areas of the scene, reducing data requirements by up to 50% compared with conventional network cameras.

Captured Image
4K

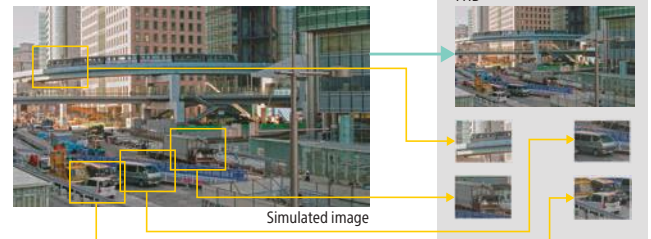


Intelligent Coding

Overview and close-up at the same time

Intelligent Cropping gives a wide area situational overview of the whole scene – like a construction site – plus a closer view of specific areas of interest at the same time. See the whole scene with Full HD resolution, plus up to four cropped image areas. This allows more efficient management of network bandwidth, reducing data storage requirements by up to 50% compared with conventional solutions.

Captured Image
4K

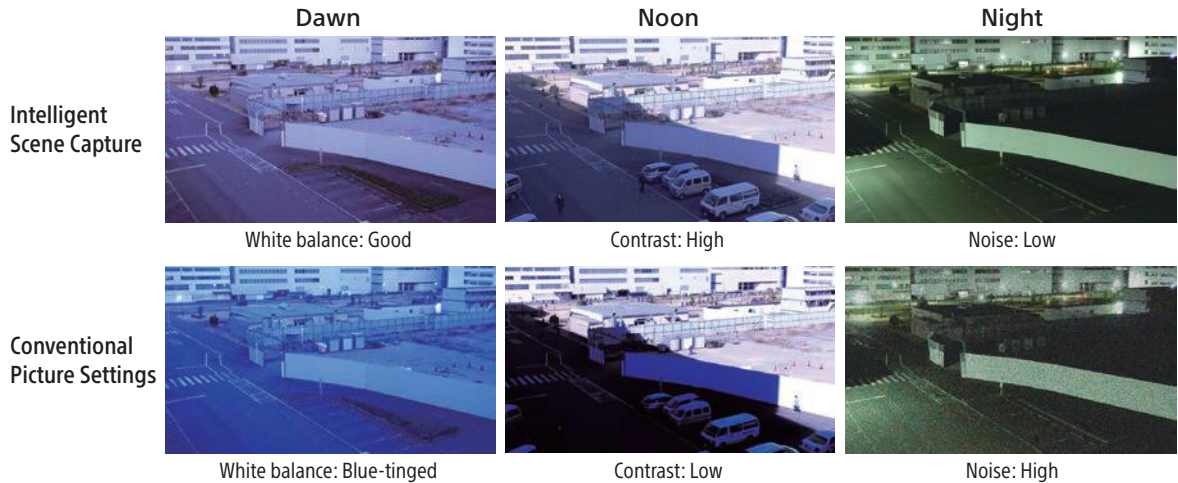


Intelligent Cropping

Best picture quality around the clock

Enjoy the best picture quality in any scene – at any time of day or night – without adjusting camera settings. Intelligent Scene Capture automatically adjusts white balance, contrast

and noise reduction for optimum images, regardless of the weather, time and lighting conditions.

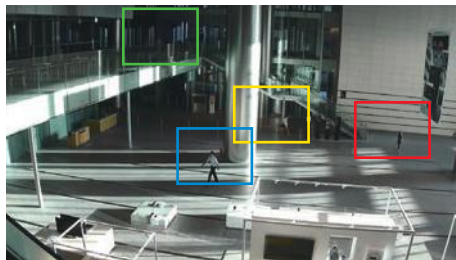


Simulated images

Track moving subjects

Ideal for monitoring building entrances and thoroughfares, Multi Tracking can recognize and dynamically track multiple subjects in separate windows – cutting the risk of missing

suspicious activity. See an overview of the whole scene in Full HD resolution, plus cropped VGA images whenever unidentified visitors comes into the frame.



Overview: Full HD



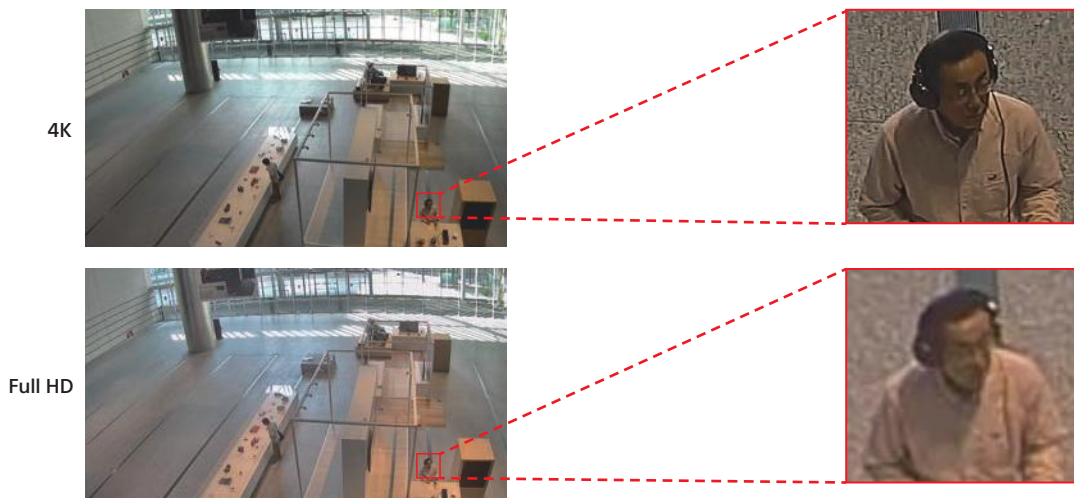
Close-up: VGA x4

Actual images

See crucial details you've never seen before

The SNC-VB770 captures detail-packed 4K images (3840 x 2160 pixels) with four times the resolution of conventional Full HD (1920 x 1080 pixels). Installed at the entrance of a building, the

camera can survey a wide range of activities – from vandalism and theft to suspicious unattended objects – accurately identifying human faces with unprecedented clarity.



The extraordinary technologies behind

Within our 4K Network Camera Systems, you will discover a high-performance and large image sensor, lens and image processor developed by Sony. Together, they are key to the extraordinary imaging performance of this ground-breaking 4K cameras - that achieves unprecedented ultra-high sensitivity, delivering images with clarity that is beyond the reach of conventional security cameras.



Image Sensor

High sensitivity and extremely low noise

- Large-sized 35mm full-frame Exmor™ CMOS sensor
- Gapless, optimally positioned on-chip lens design
- Thinner wiring layer design
- Photodiode expansion technology

SONY'S OWN CORE TECHNOLOGIES

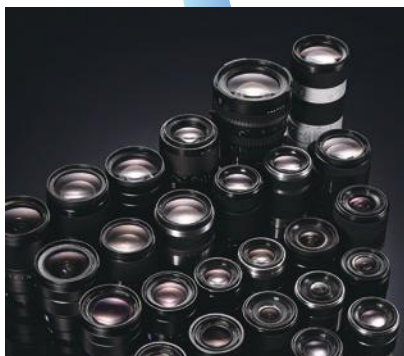


Image Processor

Industry leading Sony design and quality assurance

- Aspherical lens element and extra-low dispersion glass
- Multi-layered coating



Image Processor

Distortion correction for full depiction performance of a lens

- Detail reproduction technology and diffraction-reducing technology
- Excellent image quality with low noise



Other Features

- View-DR
- DEPA Advanced Intelligent Video Analytics
- Defog & highlight Compensation
- SD Card with notification function
- Distortion Correction
- Evidence Shot
- HDMI Output
- Clear Image Zoom 2x, Digital Zoom 2x
- ONVIF Profile S
- Edge Storage

Lens and Accessories

Model	FE28mm F2 SEL28F20	Distagon T* FE 35mm F1.4 ZA SEL35F14Z	Sonnar T* FE 55mm F1.8 ZA SEL55F18Z
Lens Images			
			
Mount	Sony E-mount	Sony E-mount	Sony E-mount
Format	35mm Full Frame	35mm Full Frame	35mm Full Frame
Focal-length	28mm	35mm	55mm
Lens Groups/Elements	8/9	8/12	5/7
Angle of View (35mm)	75°	63°	43°
Maximum Aperture (F)	2	1.4	1.8
Minimum Aperture (F)	22	16	22
Aperture Blades	9	9	9
Circular Aperture	Yes	Yes	Yes
Minimum Focus Distance	0.25m (0.82ft)	0.3m (0.98ft)	0.5m (1.64ft)
Maximum Magnification Ratio	0.16x	0.18x	0.14x
Filter Diameter	49mm	72mm	49mm
Dimensions (Diameter x Length)	64 x 60mm (2-5/8 x 2-3/8in.)	78.5 x 112.0mm (3-1/8 x 4-1/2in.)	64.4 x 70.5mm (2-5/8 x 2-7/8in.)
Weight	200g (7.1oz.)	630g (22.3oz.)	281g (10oz.)

For more Sony Full Frame E-mount lens options, please visit www.sony-asia.com

Housing



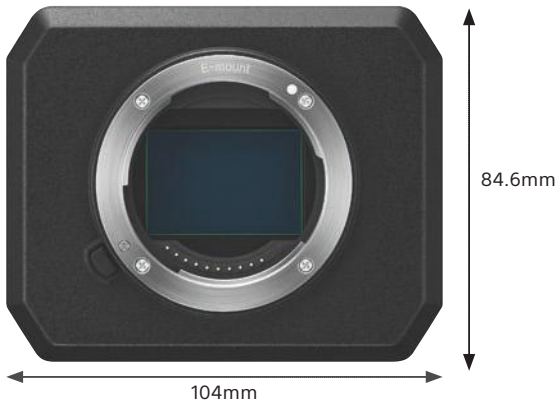
HEG37K1A143
HEG housing 365mm with sunshield and fan-assisted triple heater IN 120/230Vac, 120W



HEG47K2A016
HEG housing 450mm with sunshield, heater and blower 24 Vac with double filter with air exchange

Dimensions and External Appearance

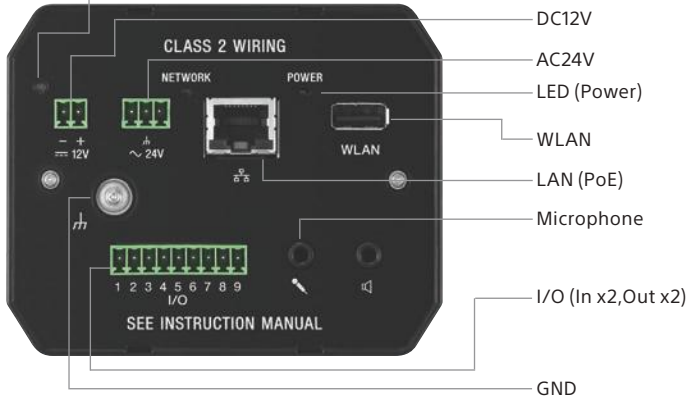
FRONT



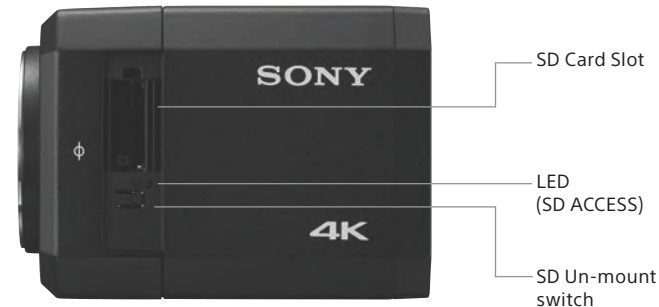
RIGHT



BACK



LEFT



Distributed by

Specifications

SNC-VB770	
Camera	
Image Sensor	35mm Full Frame Exmor CMOS Sensor
Number of Effective Pixels	Approx. 12.2 Megapixels
Minimum Illumination (30 IRE)	0.004 lx (ISO409,600, 1/30 s, F1.4)
Dynamic Range	Equivalent to 100 dB with View-DR Technology
Gain	Auto/Manual (0 dB to +72 dB)
Shutter Speed	1/1 s to 1/10,000 s
Lens	E-mount FE lens (option)
Easy Zoom	Clear image zoom 2.0x Digital zoom 2.0x
Easy Focus for Setup	Yes
Video	
Resolution	4240 x 2832, 3840 x 2160, 2880 x 2160, 1920 x 1080, 1440 x 1080, 1440 x 960, 1280 x 720, 960 x 720, 640 x 480, 640 x 360, 320 x 240, 320 x 180
Resolution via HDMI	3840 x 2160, 720 x 480, 720 x 576
Compression Format	H.264 (High/Main Profile), JPEG H.264 (B-picture) is supported for 3840 x 2160 and 2880 x 2160 resolution.
Maximum Frame Rate	H264: 30 fps (3840 x 2160) JPEG: 2.5 fps (4240 x 2832)
Bitrate Control Mode	CBR/VBR (selectable)
Range of Bit Rate Setting	64 Kbps to 32 Mbps
Intelligent Cropping (Mode)	Dynamic/Static
Intelligent Cropping (Number)	2 (1920 x 1080), 4 (640 x 480)
Intelligent Coding (Mode)	Auto/Manual
Intelligent Coding (Number)	Up to 8 (up to 4 for Auto mode)
Evidence Shot	12 Megapixels (4240 x 2832)
Multi streaming Capability	Yes (5)
Number of Clients	20
Intelligent Video/Audio Analytics	
Analytics Architecture	DEPA Advanced
Intelligent Motion Detection	Yes
Face Detection	Yes
Tamper Alarm	Yes
Scene Analytics	Intrusion, Passing, Existing, Disappearance, Capacity, Left object, Removed object
Multi Tracking	Up to 4
Audio	
Compression Format	G.711 (bit rate: 64 kbps, sampling frequency: 8 kHz) G.726 (bit rate: 40, 32, 24, 16 kbps, sampling frequency: 8 kHz) AAC-LC (bit rate: 64 kbps, sampling frequency: 16 kHz) AAC-LC (bit rate: 128 kbps, sampling frequency: 48 kHz)
Network	
Protocols	IPv4, IPv6, TCP, UDP, ARP, ICMP, ICMPv6, IGMP*, MLD*, HTTP, DHCP, DHCPv6, DNS, NTP, RTP/RTCP, RTSP over TCP, SMTP (client), HTTPS, FTP (client), SNMP (v1, v2c, v3), TLS (v1.0) *SSM (Source Specific Multicast) is supported.
QoS	DSCP
Multicast Streaming Support	Yes
Wireless Network	Yes for setup (IEEE802.11b/g/n with optional IFU-WLM3)
Wireless LAN Terminal	Yes
Card Slots	SD x1
Confirmed SD Card Type	SDHC/SDXC (Max. 128 GB)
SD OFF Switch	Yes
General	
Power Requirements	IEEE 802.3af compliant (PoE) Class 3, DC 12 V ± 25 %, AC 24 V ± 20 %, 50/60 Hz
Power Consumption	Max. 16 W (including E-mount FE lens)
Operating Temperature	-5 °C to +50 °C 23°F to 122°F
Cold Start Temperature	0 °C to +50 °C 32°F to 122°F
Storage Temperature	-20 °C to +60 °C -4°F to 140°F
Operating Humidity	20 % to 80 % (no condensation)
Storage Humidity	20 % to 80 % (no condensation)
Dimensions (W x H x D)*11	Approx. 104 mm x 84.6 mm x 118 mm (without lens) 4 1/8 inches x 3 3/8 inches x 4 3/4 inches (without lens)
Mass	Approx. 720 g (without lens) Approx. 1 lb 9.4 Oz (without lens)
Supplied Accessories	Wire rope (1) Screw (M4 x 8) (1) 9pin connector for I/O (1) 2pin connector for DC12V (1) 3pin connector for AC24V (1) Operating Instructions - Download site Information (1) Safety Regulations (1) Warranty booklet (1-year) (1) Body cap (1)

©2016 Sony Electronics Asia Pacific Pte Ltd. All rights reserved. Reproduction in whole or in part without permission is prohibited. Features and specifications are subject to change without notice. The values for mass and dimension are approximate. SONY, IPELA, and Exmor R are trademarks of Sony Corporation. All other trademarks are the property of their respective owners.